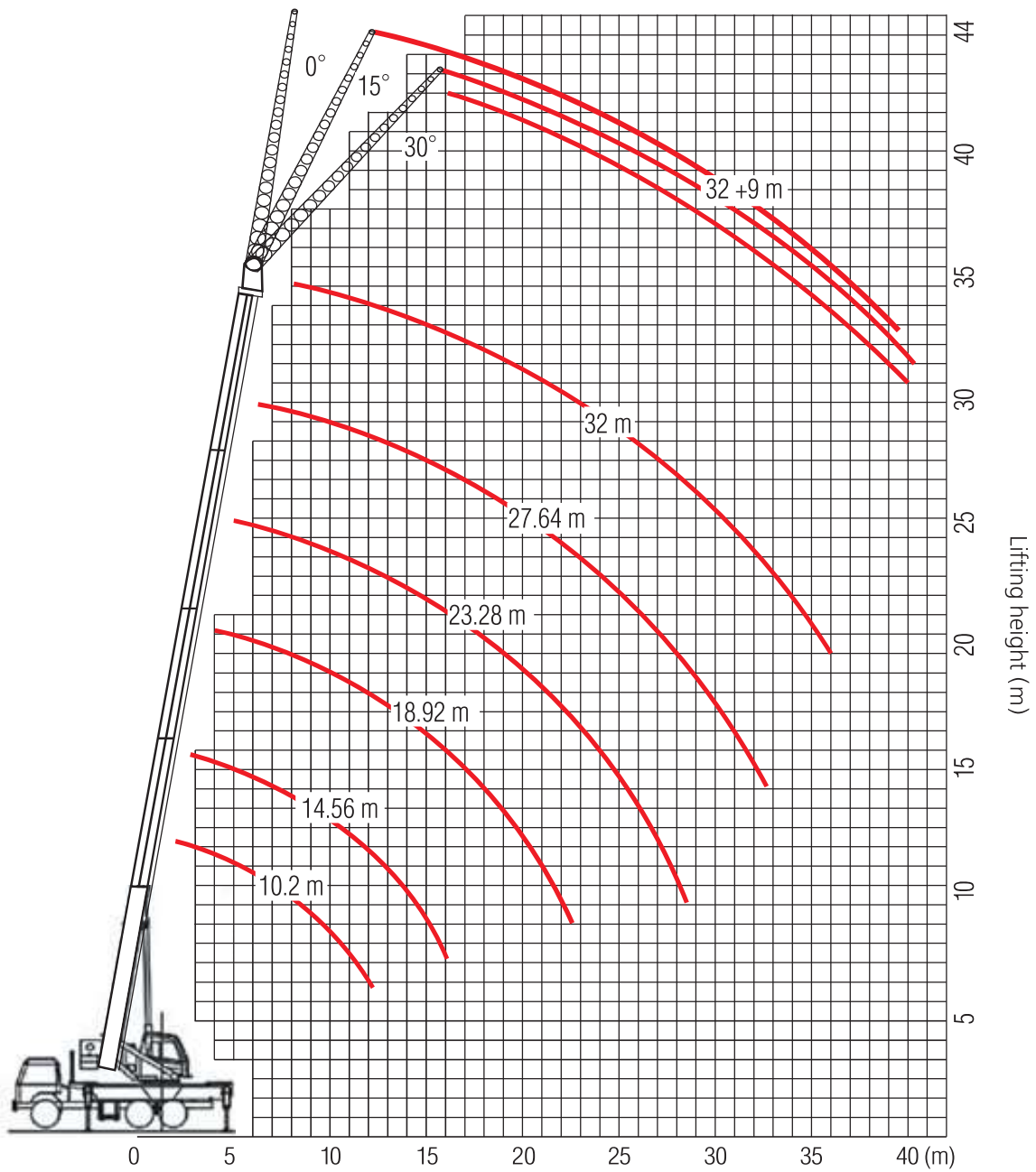


- ▷ Max. lifting capacity 25 t
- ▷ Max. lifting moment 102.0 tm
- ▷ 4-section telescopic boom 10.2 – 32.0 m

Crane Superstructure

Lifting capacity		25 t
Min. rated range		3 m
Tail slewing radius of swingtable		3.365 m
Boom section		4
Boom shape		U-shape
Max. lifting moment	Base boom	89.1 tm
Boom length	Base boom	10.2 m
	Full-extend boom	32.0 m
	Full-extend boom+jib	41.0 m
Outrigger span (Longitudinal×Lateral)		5450 X 6200 mm
Jib offset		0° 15° 30°
Max. single rope lifting speed of main winch (no load)		115 m/min
Full extension/retraction time of boom		95/60 s
Full lifting/descending time of boom		50/42 s
Slewing speed		2.0 r/min
High Voltage Detector		included

Working ranges


Working radius (m)

Radius, m	Boom length, m					
	10.2 m	14.56 m	18.92 m	23.28 m	27.64 m	32 m
3	25000					
3.5	24200	19300	14500			
4	22200	18300	14500	10200		
4.5	19800	17100	14500	10000		
5	16600	15500	13670	9700	8200	
5.5	14400	13500	12300	9300	8000	
6	12700	11900	10880	8800	7600	6700
6.5	11300	10600	9720	8200	7000	6500
7	9800	9500	8760	7400	6500	6300
8	8000	7800	7270	6600	5800	5700
9		6600	6150	5900	5200	5100
10		5700	5280	5000	4400	4300
12		4100	4020	3900	3500	3400
14			3110	3070	2800	2600
16			2450	2430	2300	2200
18				1900	1890	1700
20				1500	1460	1300
22					1130	1050
24					890	820
26						660
28						520
parts of line	8	7	6	5	4	3